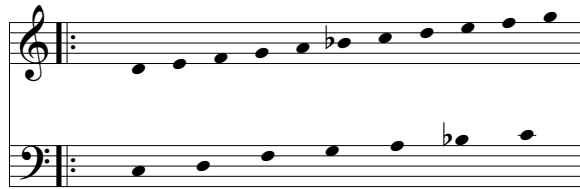


Prelude in F Major

3 Octaves
Handbells Used: 18



Andante piacevole, ♩ = 80-84

Frederick FRAHM
ASCAP

Musical notation for the first system of the piano accompaniment. It features a treble and bass clef staff. The treble staff contains chords: C4-E4-G4, D4-F4-A4, E4-G4-Bb4, F4-A4-C5, G4-Bb4-D5, A4-C5-E5, F5-A5-Bb5, C6. The bass staff contains notes: C3, D3, E3, F3, G3, A3, Bb3, C4, D4, E4, F4, G4, A4, Bb4, C5. A piano (*p*) dynamic marking is present. A red watermark "www.frederickfrahm.com" is overlaid diagonally.

Musical notation for the second system of the piano accompaniment. It features a treble and bass clef staff. The treble staff contains chords: C4-E4-G4, D4-F4-A4, E4-G4-Bb4, F4-A4-C5, G4-Bb4-D5, A4-C5-E5, F5-A5-Bb5, C6. The bass staff contains notes: C3, D3, E3, F3, G3, A3, Bb3, C4, D4, E4, F4, G4, A4, Bb4, C5. A piano (*p*) dynamic marking is present. A red watermark "www.frederickfrahm.com" is overlaid diagonally.

Musical notation for the third system of the piano accompaniment. It features a treble and bass clef staff. The treble staff contains chords: C4-E4-G4, D4-F4-A4, E4-G4-Bb4, F4-A4-C5, G4-Bb4-D5, A4-C5-E5, F5-A5-Bb5, C6. The bass staff contains notes: C3, D3, E3, F3, G3, A3, Bb3, C4, D4, E4, F4, G4, A4, Bb4, C5. A mezzo-piano (*mp*) dynamic marking is present. A red watermark "www.frederickfrahm.com" is overlaid diagonally.